



Simplifying Connectivity

**ENTERPRISE SOLUTIONS**

# ABOUT INDIO

Established : 2005

Indio Networks provides a complete range of wireless networking solutions for managing public and enterprise networks, Wi-Fi hotspots and IOT deployments.



Among the top 3 hotspot companies in the world



Presence in 45+ Countries



Full range of WiFi Products



25000+ venues



Offices in USA, UAE and India



Multiple awards and recognitions



16+ years of industry leadership



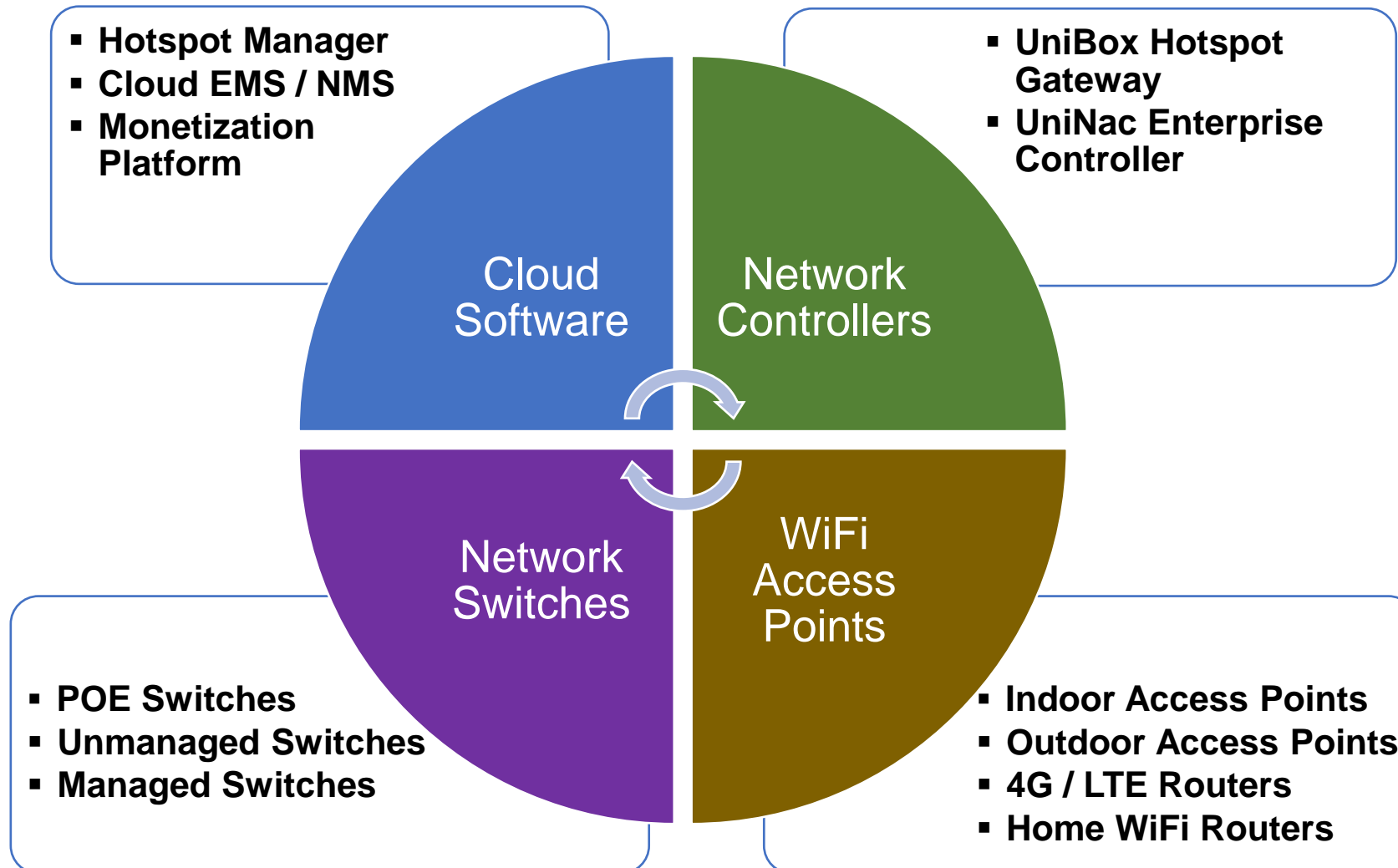
Resellers in 20+ countries



24x7 customer support

# Indio Products

**OEM with deep expertise in WiFi Hardware, Firmware & Cloud Software**



# Industries Served

Delivering customized wireless solutions for different verticals

## HOSPITALITY



- Guest Access
- PMS Billing
- Conference Wi-Fi
- Location Ads
- Branded Portals
- Loyalty Programs

## RETAIL



- Venue Branding
- Targeted Ads
- Location Services
- Social Media Marketing
- Surveys
- Push Notifications

## EDUCATION



- Multiple SSIDs
- Managed Wi-Fi
- LDAP/AD Integration
- URL Filtering
- Group Policies
- Local Caching

## HEALTH-CARE



- Enterprise Wi-Fi
- Guest Access
- Network Security
- Asset Tracking

## TRANSPORTATION



- Mobile Hotspots
- Vehicle Tracking
- Wi-Fi Entertainment
- Bandwidth Control
- IOT Gateway



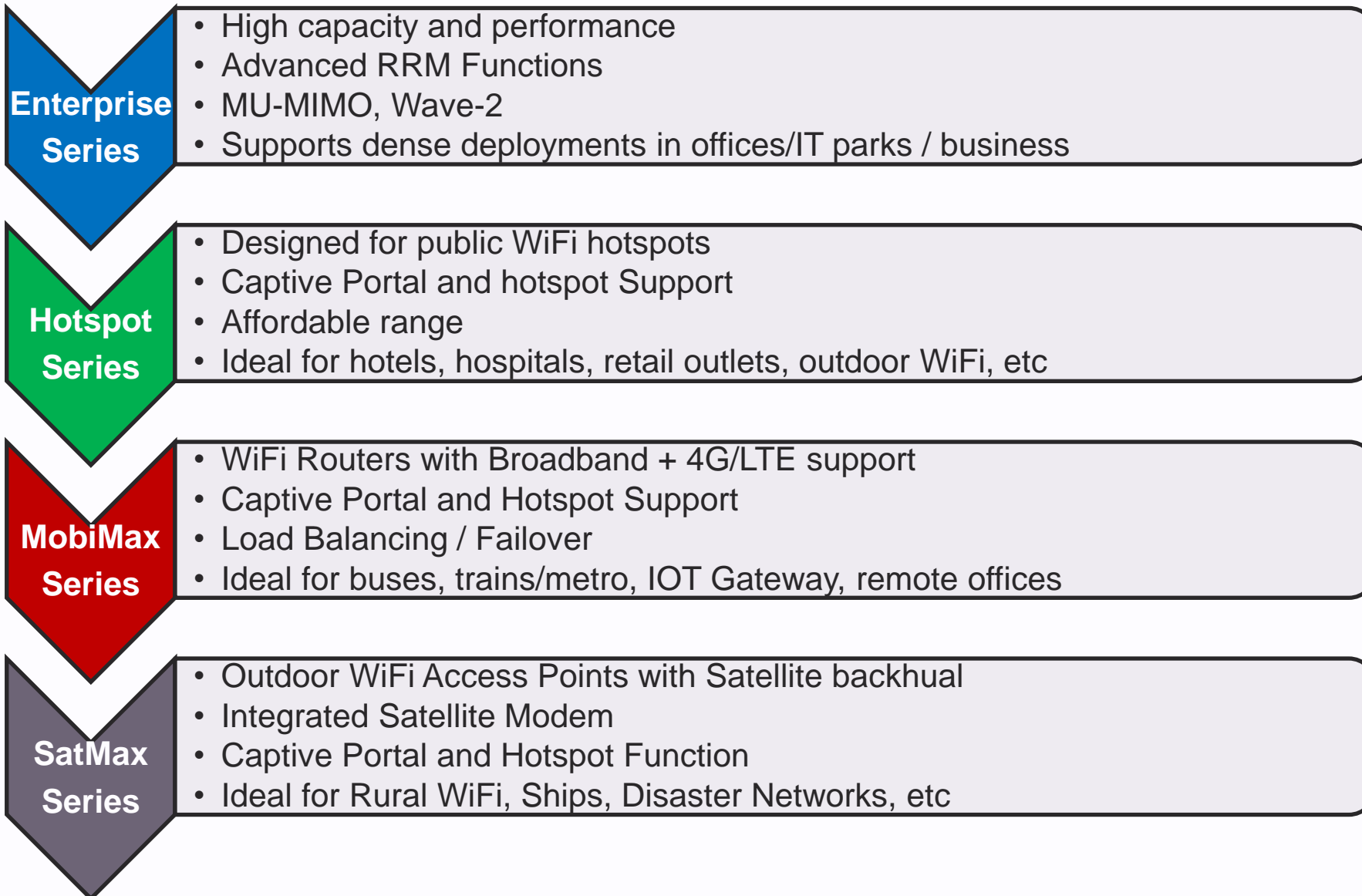
# Key Differentiators

Rich experience, proven products and local support for any sized WiFi deployments



# Cloud Managed WiFi

# Access Points Overview



# Access Point Models

Cloud managed, enterprise grade, smart access points

## Falcon Enterprise Series – (Qualcomm)

- EN 320
- EN 330
- EN 350

## UniMax Hotspot Series – (Qualcomm)

- UM 305AC
- UM 310AC
- UM 510AC (outdoor)
- UM 530AC (outdoor)

## MobiMax 4G-LTE Routers – (Mediatek)

- UM 710N
- UM 720AC

## SatMax Hotspot Series – (Qualcomm)

- UM 530N-SAT (outdoor)





# Access Points Specs

Full range of enterprise indoor and outdoor WiFi Access Points

No.	AP Model	Type	WAN	MIMO	Chipset	Radios	Standard	Link Speed (Mbps)
1	EN350	Indoor	1Gbps	2x2	IPQ4019 + QCA9886 + QCA8075	3	11ac, Wave2, Backward compatible	2200
2	EN330	Indoor	1Gbps	3x3	QCA9563 + QCA9880 + QCA8334	2		1750
3	EN320	Indoor	1Gbps	2x2	IPQ4019+ QCA8075	2		1300
4	UM305AC	Indoor	100 Mbps	2x2 in 2.4GHz 1x1 in 5GHz	QCA9531 + QCA9887	2	11ac, Wave2, backward compatible	750
5	UM310AC	Indoor	1Gbps	2x2	QCA9563 + QCA9882 + QCA8035	2	11ac, Wave1, backward compatible	1200
6	UM510AC	Outdoor	1Gbps	2x2	QCA9563 + QCA9882 + QCA8035	2	11ac, Wave1, backward compatible	1200
7	UM530AC	Outdoor	1Gbps	2x2	QCA9563 + QCA9882 + QCA8035	2	11ac, Wave1, backward compatible	1200
8	UM720AC	Indoor/Vehicular	100 Mbps	2x2	MT7621 + MT7612EN + MT7603EN	2 WiFi radios, 2 LTE radios for backhaul	11ac, Wave1 Backward compatible	1200
9	UM710N	Indoor/Vehicular	100 Mbps	2x2	MT7620N	1 WiFi radio, 1 LTE radio for backhaul	11ng	300
10	UM530N-SAT	Outdoor	100 Mbps	2x2	QCA9531	2 WiFi radios, 1 backhaul Satellite modem	11ng	300

# Access Point Features

## Software features for cloud-managed WiFi Access Points



Enterprise-grade  
Access Points



Cloud or Controller  
Managed



Single Console  
Administration



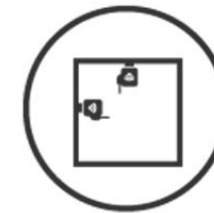
Long Range



Transmit Power  
Control



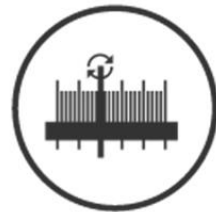
Hotspot /  
Captive Portal



Wall or Ceiling  
Mount



Mesh-enabled



Auto-channel  
Selection



Per-user Bandwidth  
Management



Plug-n-play Setup



Multiple SSIDs  
and VLAN



Remote Firmware  
Upgrade



PoE Enabled

# Access Point Details

**Wide range of managed access points for hotspot deployments**



## UM-305AC - Entry-level, Dual-Band AP

- Dual-Band, 1x1 MIMO, 750 Mbps
- Ideal for small hotels and hospitals, restaurants, etc
- 



## UM-510AC – Mainstream, Outdoor AP

- Dual-band, 2x2 MIMO, 1200 Mbps
- Ideal for public areas, parks, campus, etc



## UM-310AC, Mainstream, Dual-band AP

- Dual-band, 2x2, MIMO, 1200 Mbps
- Ideal for large hotels, common areas, classrooms
- High Transmit Power



## UM-530AC – Rugged, Outdoor AP

- Dual-band, 2x2 MIMO, 1200 Mbps
- Ideal for rugged deployments in factories, rural WiFi



## UM-330AC, High grade, Dual-Band AP

- Dual-band, 3x3, MU-MIMO, 1750 Mbps
- Ideal for conference centres, halls and big classrooms
- High Transmit Power



## UM-720AC – 4G/LTE Managed Router

- Dual-band, Dual-SIM 4G/LTE Router
- Ideal for buses, mobile offices, IOT deployments

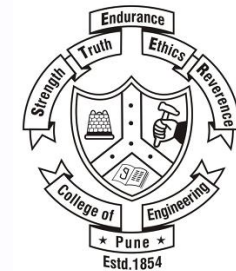
# Wi-Fi 6 AP Specs

## Technical Specs Comparison of WiFi-6 APs

No.	Feature/Model	UM-310AX	UM-330AX
1	Deployment	Indoor	Indoor
2	Segment	Entry level	Mainstream
3	MIMO	2x2	2x2 in 2.4GHz and 4x4 in 5 GHz
4	Frequency support	2.412~2.472 GHz 5.150~5.825 GHz	2.412~2.472 GHz 5.150~5.825 GHz
5	Chipset ( SOC)	Cypress Series	IPQ8071
6	Chipset ( Radio)	QCN 5022, QCN 5052	QCN5024, QCN 5054
7	No of Radio's	2	2
8	Power consumption	~20 W	~25W
9	Power supply	12V/2A DC, Custom support for 802.3at POE	802.3at POE
10	WAN Port/Wired Backhaul	2.5Gbps	2.5 Gbps
11	Antenna Type	Internal, External	Internal, External
13	Peak Data Rate	<b>1774 Mbps</b> 2.4 GHz: 573 Mbps 5 GHz: 1201 Mbps	<b>3066 Mbps</b> 2.4 GHz: 591 Mbps 5 GHz: 2475 Mbps
14	Housing/Case	Not ready	Ready
15	Firmware SDK	Licensed QSDK	Licensed QSDK
16	Production Readiness	Under Development (Q3,20)	Under Development (Q3,20)

# Case Studies

Wifisoft has deployed cloud-managed AP solutions for customers worldwide



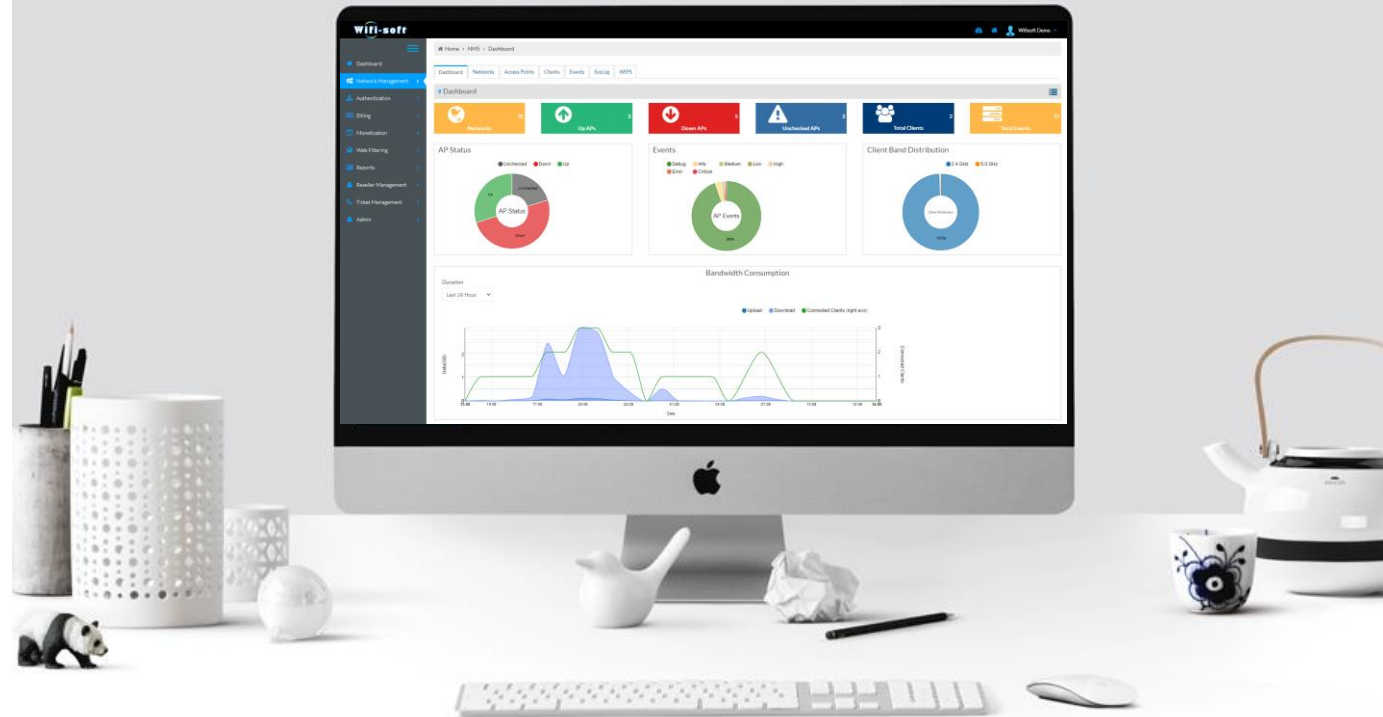
# Cloud AP Controller



# WiOS Cloud Controller

## Highlights

- Cloud-Managed Wireless Controller
- Configuration Templates
- Advance RF Management (RRM) Features
- Hierarchical Network Management
- Alerts & Notifications
- Deep Network Visibility
- Wi-Fi Analytics and Troubleshooting
- Real-Time Dashboards



Retail



Transportation



Hospitality



Public Wi-Fi



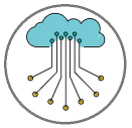
Education



Enterprise

# Cloud Controller Features

**Highly customizable, massively scalable architecture for Managed WiFi**



AP Manager



Zero Touch  
Configuration



Rich Network  
Analytics



Management  
Hierarchy



Standards  
Compliant



Location-based  
Analytics



Telemetry  
Data



Auto  
Firmware  
Upgrades



Open-Source  
Integration



NMS &  
B/OSS



Rich Captive  
Portals



Micro Service  
Architecture

# Case Studies

Wifisoft Cloud Controllers deployed for managing networks for key customers



# OSS/BSS Platform

# WiOS Cloud OSS/BSS

- Industry Proven, Award-Winning OSS/BSS
- Single Console Management
- Multi-vendor Support
- Scalable, Micro-Service Architecture
- Fault-Tolerant AAA Server
- TRAI / DoT Compliant
- Hotspot Billing & Monetization
- Multi-Tenancy
- On-Prem/Cloud Deployment
- Flexible Design



[Enterprises](#)



[Education](#)



[Hospitality](#)



[Transport](#)



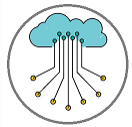
[Retail](#)



[Public WiFi](#)

# Integrated Wi-Fi OSS/BSS

Wifisoft offers a complete WiFi OSS/BSS plus monetization solution



Cloud  
Management



AAA  
Services



Multi-  
Tenancy



Captive  
Portals



Partner  
Hierarchy



Subscriber  
Management



On-Premise  
or Cloud



Vouchers



Multi-Vendor  
Support



WiFi Billing



REST API



User  
Analytics



Policy  
Manager

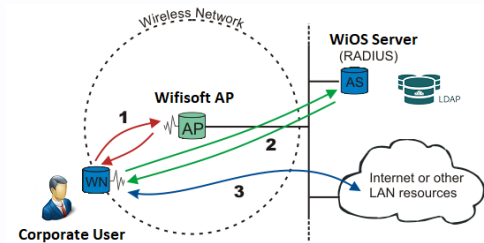


WiFi  
Monetization



# Login Methods

WIOS OSS/BSS platform support wide range of login methods



802.1x Login



PMS Users



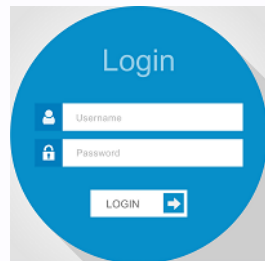
Vouchers



Social Media



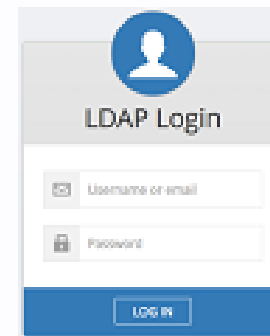
Ad Supported



Username/Password



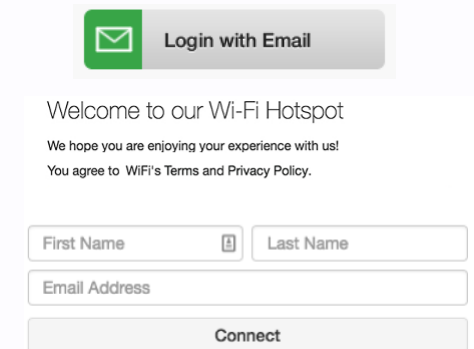
SMS/OTP Login



LDAP Users



Free Access



Email Verification

# WiFi Monetization

**WiOS platform offers various monetization functions for WiFi deployments**



# Multi-Vendor Support

Seamless integration with WiFi solutions on vendor-agnostic platform

Wifi-softRUCKUS™  
an ARRIS companyProCurve  
Networking by HPZyXELCISCO™MikroTikCISCO  
Meraki  
Cambium Networksaruba  
a Hewlett Packard  
Enterprise companyNOMADIX®FORTINET.cradlepoint

# Case Studies

Market proven, award-winning OSS/BSS solution serving customers since 2005



# UniBox Hotspot Controller

# UniBox Hotspot Controllers



- On Premises deployments
- Designed for Wired & Wireless Networks
- Full-Featured Hotspot Manager
- Supports AAA server & User Administration
- Interfaces with APs of any make/model
- Available from 50 – 5000 user models
- Integrates multiple Billing & PMS platforms
- On-board Captive Portal



[Offices](#)



[Education](#)



[Hospitality](#)



[Transport](#)



[Retail](#)

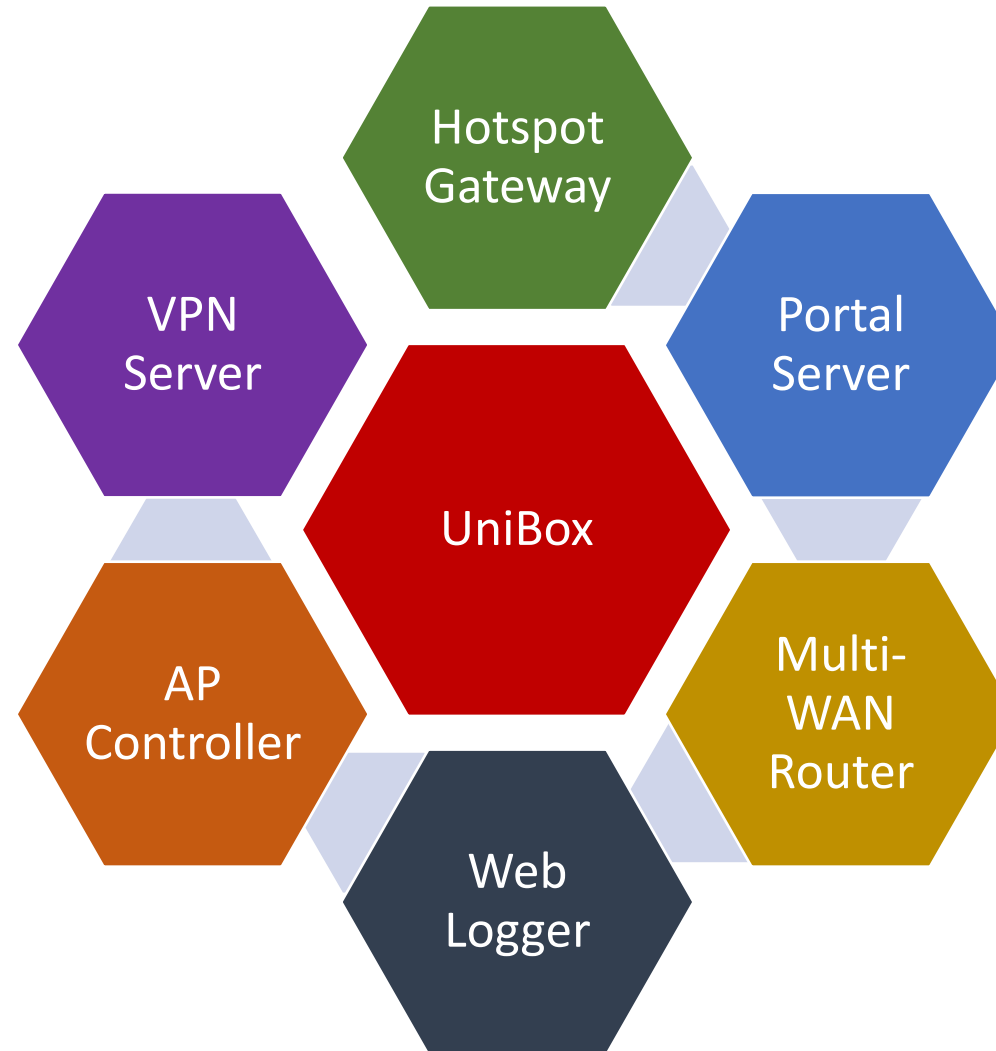


[Public Wi-Fi](#)



# Multi-Functional UniBox

Single appliance saves cost of multiple devices in public WiFi deployments



# UniBox Highlights

Feature-rich Edge Gateway for WiFi hotspots with Cloud Integration

Hotspot  
Gateway

AAA Server  
(local or remote)

Multi-Vendor  
AP Support

User  
Management

Captive  
Portals

PMS  
Integration

Bandwidth/  
Policy  
Manager

Social Media  
& Analytics

AP Controller

TRAI / DoT  
Compliance

Web logs &  
URL Filter

Voucher  
Manager

# UniBox PMS Support

Seamless integration with local PMS system for guest validation & billing



Control Integrates with over 25 different PMS systems.

\* Integration ready. Needs Oracle certification

# UniBox Case Studies

Deployed in wide range of venues around the world



# Other Products

# POE Switches



- High Performance L2 Switches
- Managed & Unmanaged Options
- All Gigabit Ports
- POE+ Support
- SFP+ Uplink Ports
- Multiple Variants 8 / 16 / 24 Ports
- Ideal for APs, IP Cameras & IP Phones
- Up to 30W per port



[Enterprises](#)



[Education](#)



[Hospitality](#)



[Transport](#)



[Retail](#)



[Public WiFi](#)



# MOBIMAX

## 4G/ LTE Routers



- 4G/LTE Wi-Fi Routers
- Designed for Vehicles & Mobile Networks
- Integrated Hotspot
- 4G Aggregation
- Better reception with external antenna
- Central Cloud Manager
- Compatible with Leading 4G Operators
- GPS Enabled (optional)



[Enterprises](#)



[Education](#)



[Hospitality](#)



[Transport](#)



[Retail](#)



[Public Wi-Fi](#)

# Summary

**Wifisoft offers full range of WiFi Stack with deep technical expertise**

